



INSTALLATION SOLUTIONS

SB-0024-5, Rev. 14

TURBINE GENERATOR APPLICATIONS (& OTHER LIFTING APPLICATIONS)

RK Fixator Technical Specifications

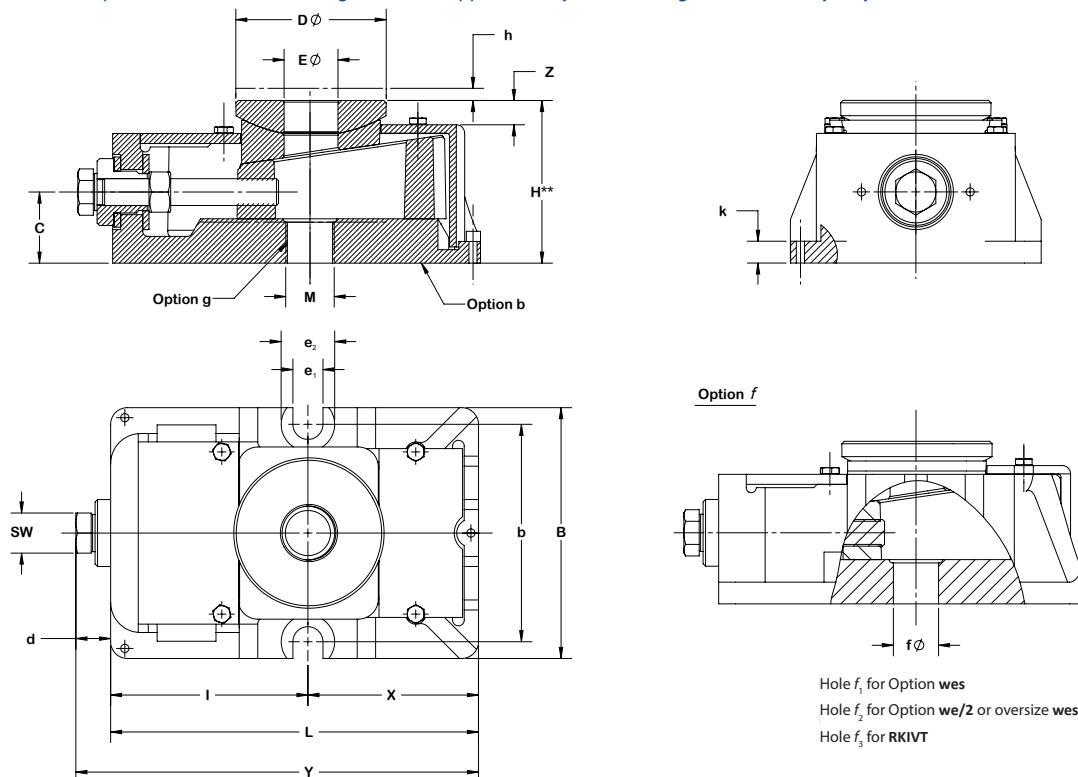
		RKI		RKII		RKIII		RKIV / RKIVT		RKV		RKVI	
Max. Allowable Lift Load/RK	lbs/N	20,000	90,000	26,500	120,000	53,500	240,000	80,500	360,000	157,000	700,000	269,500	1,200,000
Spring constant	lbs/in./N/μm	11,420,000	2,000	25,695,000	4,500	45,681,000	8,000	57,101,000	10,000	79,942,000	14,000	102,782,000	18,000
Vertical adj. / rev.	in/mm	0.010	0.25	0.010	0.25	0.012	0.29	0.014	0.35	0.017	0.43	0.020	0.50
Max. vertical adj.	in/mm	0.20	5	0.20	5	0.24	6	0.32*	8*	0.40	10	0.51	13
Approx. torque to turn adjusting screw	Ft-lb / 1000 lbs load Nm / 1000kg	1.0	3	1.0	3	1.3	4	1.5	4.5	1.8	5.5	2.3	7
Max. allowable torque on adj. screw	ft lb/Nm	20	27	27	36	71	96	118	160	284	385	516	700
Weight of basic unit	lbs/kg	8.8	4	12.1	5.5	25.3	11.5	46.2	21	92.4	42	154.3	70

* 6mm with a 50mm dia. bolt. / 0.24" with 2" dia. bolt.

RK Fixator Dimensions* (in/mm)**

RK	M	L	B	H**	D Ø	SW	E Ø	d	c	z	h	l	b	e ₁	e ₂	k	X	Y	f ₁ Ø	f ₂ Ø
I	M12	6.89/175	4.13/105	2.17/55	2.36/60	19mm	0.79/20	0.63/16	0.83/21	0.51/13	0.20/5	3.62/92	3.54/90	0.55/14	1.02/26	0.47/12	3.27/83	7.52/191	0.67/17	0.75/19
II	M20	7.01/178	4.72/120	2.95/75	2.95/75	19mm	1.02/26	0.59/15	1.22/31	0.59/15	0.20/5	3.78/96	3.94/100	0.55/14	1.02/26	0.51/13	3.23/82	7.60/193	0.83/21	0.98/25
III	M24	8.66/220	5.91/150	3.74/95	3.54/90	24mm	1.26/32	0.87/22	1.57/40	0.67/17	0.24/6	4.65/118	5.12/130	0.71/18	1.26/32	0.87/22	4.02/102	9.53/242	0.98/25	1.22/31
IV	M30	10.83/275	7.09/180	4.53/115	4.33/110	30mm	1.57/40	0.94/24	1.93/49	0.67/17	0.31/8	5.59/142	6.30/160	0.94/24	1.50/38	0.94/24	5.24/133	11.77/299	1.22/31	1.46/37
V	M36	13.58/345	9.06/230	5.31/135	5.91/150	36mm	1.89/48	1.34/34	2.28/58	0.79/20	0.39/10	7.09/180	8.07/205	1.10/28	1.81/46	1.34/34	6.50/165	14.92/379	1.46/37	1.73/44
VI	M42	16.54/420	10.63/270	6.50/165	7.87/200	46mm	3.15/80	1.34/34	2.64/67	1.26/32	0.51/13	9.06/230	9.65/245	1.10/28	1.81/46	1.22/31	7.48/190	17.87/454	2.28/58	----

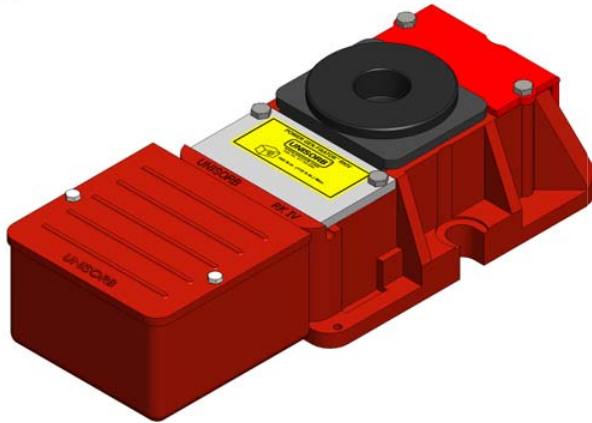
** Height with machine base (Option b), for standard casting, add 0.08" (approximately) *** Casting dimensions may vary.





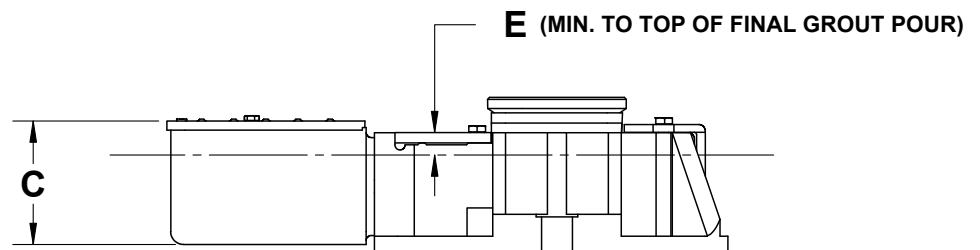
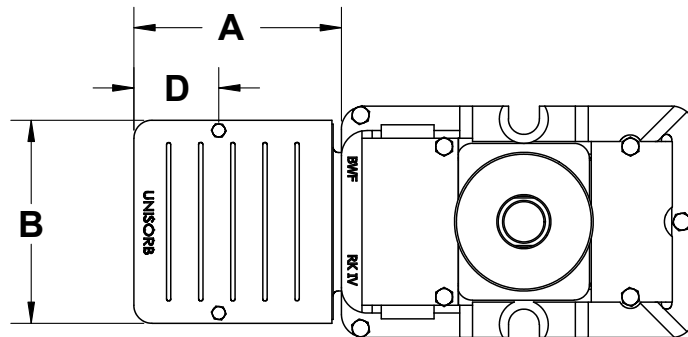
INSTALLATION SOLUTIONS

SB-0024-5, Rev. 14



Dimensions (in/mm)					
RK	A	B	C	D	E (MIN.)
II	6.10/155	6.22/158	3.15/80	2.60/66	0.50/13
III	6.10/155	6.22/158	3.15/80	2.60/66	0.50/13
IV	6.36/161.5	6.22/158	3.78/96	2.60/66	0.75/19
V	6.36/161.5	6.22/158	3.78/96	2.60/66	1.00/25
VI	7.89/200.5	7.52/191	5.00/127	2.60/66	1.00/25

Dimensions shown are nominal.



Adjustment Bolt Hex Wrench Size

	RKI	RKII	RKIII	RKIV	RKV	RKVI
	Wrench* (SAE/mm)	Wrench* (SAE/mm)	Wrench* (SAE/mm)	Wrench* (SAE/mm)	Wrench* (SAE/mm)	Wrench* (SAE/mm)
Adjustment Screw	3/4 / 19	3/4 / 19	15/16 / 24	1-3/16 / 30	1-7/16 / 36	1-13/16 / 46
Lock Nut	3/4 / 19	3/4 / 19	15/16 / 24	1-3/16 / 30	1-7/16 / 36	1-13/16 / 46
Front Cover Bolt	3/8 / 10	3/4 / 19	3/8 / 10	1/2 / 13	1/2 / 13	1/2 / 13
Rear Cover Bolt	3/8 / 10	3/8 / 10	3/8 / 10	1/2 / 13	1/2 / 13	1/2 / 13
Pre-Leveling Screw	3/8 / 10	3/8 / 10	3/8 / 10	1/2 / 13	1/2 / 13	1/2 / 13
MB Attaching Bolt	3/8 / 10	3/8 / 10	3/8 / 10	1/2 / 13	1/2 / 13	1/2 / 13
MB Cover Bolt	3/8 / 10	3/8 / 10	3/8 / 10	3/8 / 10	3/8 / 10	3/8 / 10
Option le / les	3/4 / 19	3/4 / 19	3/4 / 19	3/4 / 19	3/4 / 19	7/8 / 22

*Wrench sizes shown include both metric and SAE equivalents to accommodate the adjustment bolt hex sizes.
ALL ADJUSTMENT BOLTS ARE METRIC, EXCEPT FOR OPTION LE AND LES, WHICH ARE SAE.